

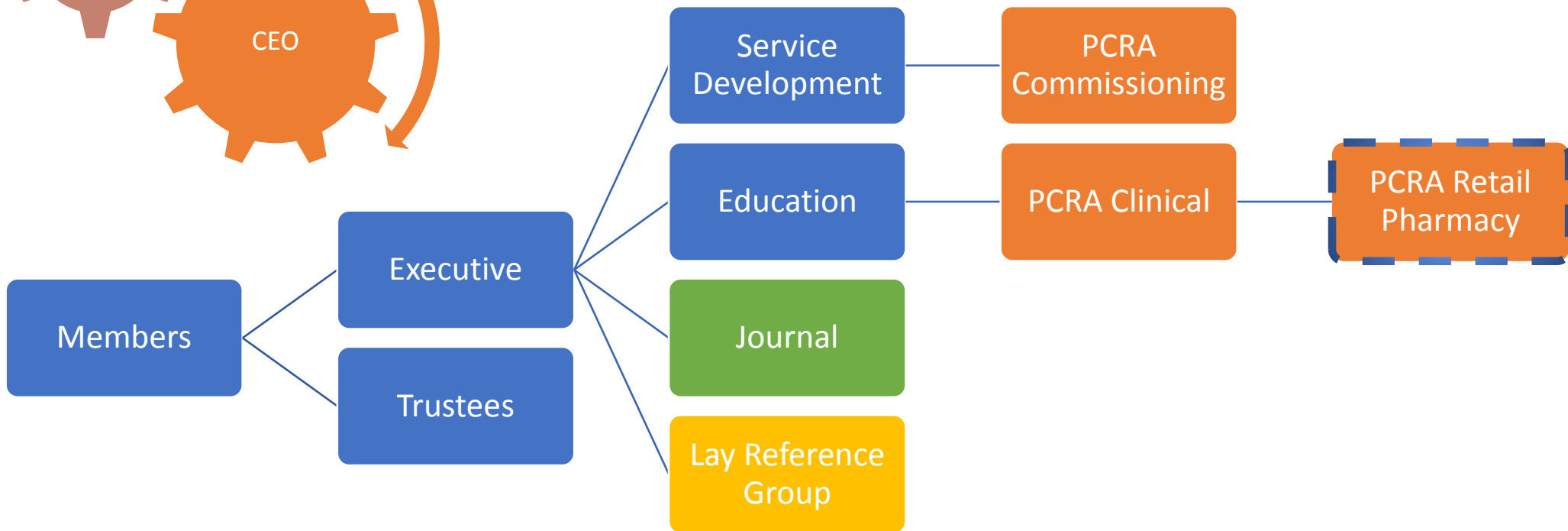
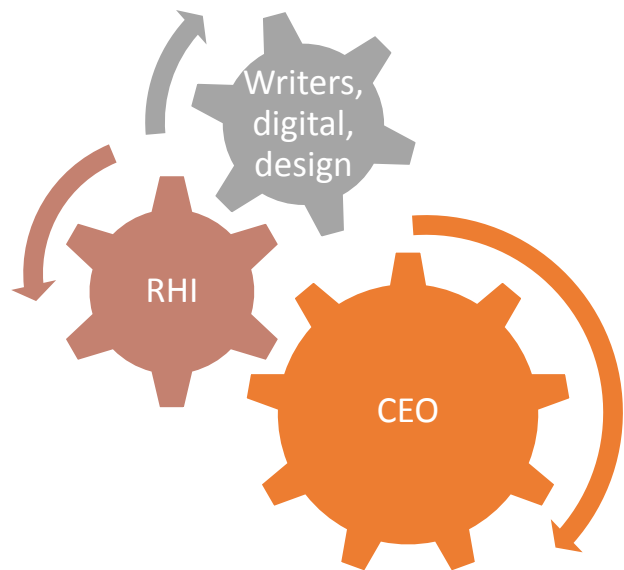


PCRS Update

Noel Baxter







Inspiring best practice in respiratory care

POLICY

Diagnosis

Input to Lung health taskforce via members, and seat at table;
Respiratory to feature in NHS LTP, and good NHSE/PCRS liaison plus seat at table



Spiro training and national register – ARTP/ICST liaison, Scrutiny board input (June/Dec), engaging NHSE on e.g. spirometry register, breathlessness guideline, coding for diagnosis

Indicators and coding

Input to QOF strategic review and asthma QOF revision; Atlas of variation; READ to SNOMED – initial mapping of COPD audit queries; Engaging NHSE on coding issues; Input to review of COPD/asthma QOF (Nov/Dec)

National guidelines – COPD and asthma

Lobbying for single comprehensive guideline with NICE/SIGN/BTS and input to revised asthma guideline review; NICE COPD draft guideline input (prompted extension to include triple therapy and guidance on OS course length); did not support revised asthma quality standard

Engaging NHSE on data collecting in England for COPD/asthma audit

Tobacco dependency

Input to NICE stop smoking interventions and services guideline; pushing for NHS engagement on treating tobacco dependency (vs public health)

Sustainability/ inhalers

BTS environment statement; NHS sustainability unit looking at environmental issues re inhalers – rec NHS reduces MDIs by 50% by 2020

Clinical Strategy



DISEASE FOCUS

- COPD, asthma, tobacco dependency plus allergy /infection
&

HOLISTIC /PATIENT FOCUS

- Diagnosis, multi-morbidity, patient activation /supported self-management, symptom management

Value Based Care **Digital First**